

# MASTER LP DRILL JUMBO

## TECHNICAL SPECIFICATION



## FEATURES

### SAFE WORKING ENVIRONMENT

- ISO ROPS/FOPS certified
- Optional monitor (cameras) to increase operator's visibility during operation
- Door interlock

### ENVIRONMENTAL

- Fuel efficient, clean burning Tier 2/Stage II engine
- Purifier with fume diluter

### SERVICEABILITY

- All daily check points easily reachable
- Quick and easy service to increase productivity
- Option of self lubrication systems

- Air, hydraulic and transmission filter change indicators
- Easy access to service points, filters and valve blocks

### OPERATOR'S COMFORT

- Comfortable T-back seat
- Steering and hydraulic controls ergonomically placed

### RELIABILITY

- Proven powertrain: Dana powershift transmission
- Mechanical gear control in cab
- Machine status indication lights

## SPECIFICATIONS

- Vehicle height 1 630mm
- Vehicle length 13 134mm
- Vehicle width 2 355mm
- Ground clearance 300mm
- Inner turning radius 4 073mm
- Outer turning radius 6 724mm
- Centre articulation 40°
- Rear oscillation 10°
- Gross vehicle weight empty 21 000kg

## ENGINE

- Type F6L914
- Power rating 92kW at 2 300rpm
- Torque 430Nm at 1 500rpm
- Fuel consumption 220g/kWh
- Engine protection As per customer requirements
- Air cleaner Two stage
- Catalytic converter
- Diluter

## TRANSMISSION/TORQUE CONVERTER

- 3 speed forward and reverse with modulation
- Dana T20 000 with remote converter

## AXLES

- Kessler D71 heavy duty
- Rigid planetary axles

## BRAKES

- Failsafe brake on all four wheels
- Park/emergency type SAHR

## TYRES

- Tyre size 12.00 x 20
- Designed for underground mine services
- Pnuematic or foam-filled

## ELECTRICAL SYSTEM

- Carrier electrical system
- Voltage 24V
- Alternator max. current 55A
- Isolation switch lockout
- Main electrical system
- Max. power 55kW
- Supply voltage 550V or 1 000V
- Thermal current overload protection

## HYDRAULIC SYSTEM

- Carrier hydraulic system
- Drive Direct from engine
- Pump type Gear pump
- Max. system pressure 17,5MPa
- System type Open loop
- Main hydraulic system
- Drive 55kW, 4 pole electric motor
- Pump type Fixed or variable displacement piston pump
- Max. system pressure 23MPa

- Max. flow rate 165 litres/min
- System type Open and closed loop
- Hydraulic level switch detection

### FUEL SYSTEM

- Fuel tank capacity 85 litres

### BOLTING SYSTEM

- Boom 1 x A40
- Boom extension 1 000mm
- Feed 1 x F4 000 steel feed
- Feed drive Hydraulic cylinder
- Drifter HD150/HD155

### AIR SYSTEM

- Drive Hydraulic or electrical
- Power 7.5kW
- Max. pressure 10 bar
- Lubrication Oil drip feed

### SAFETY

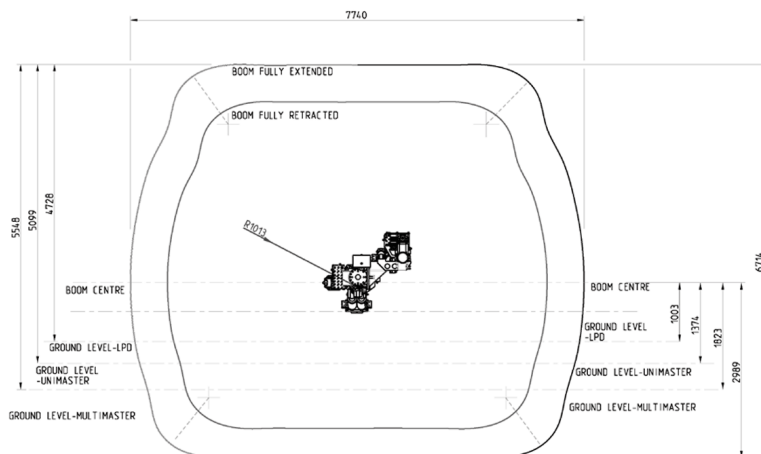
- ISO ROPS/FOPS certified
- Fire extinguisher
- Reverse hooter
- Door interlock
- Marker lamps red/green
- Wheel stop blocks

### OPTIONAL EQUIPMENT

- Manually/automatically actuated fire suppression engine shut down
- Central lubrication management system
- Automatic lubrication system
- Halogen, LED or sealed beam lights
- Electrical gear control inside cab

### DOCUMENTS

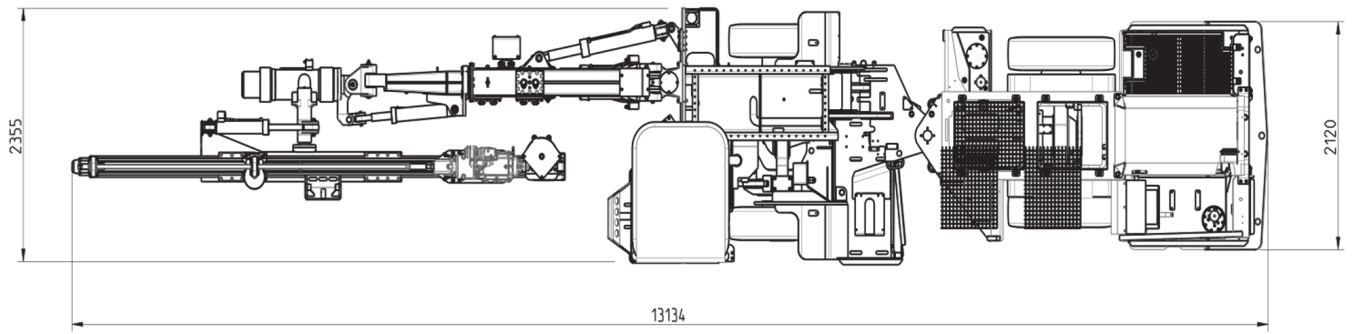
- Parts manual
- Technical manual
- Risk assessment



### COVERAGE

-BDS40 MKIII BOOM WITH SIDE MTD SLIDE SUPPORT:  
-(PARALLEL DRILLING)

## TOP VIEW



## SIDE VIEW

